

## GPS TRACKING

A smartphone is used for GPS tracking. The system requires some preparations in the rally vehicle before the start of the rally so that the vehicle can be securely fixed. These are described below. If you have any questions, we are happy to help!

With the GPS tracking system we have better and faster communication between the rally HQ and rally participants. SOS or OK messages can be passed on to the right officials as quickly as possible. In the event of an accident or breakdown, the officials can determine exactly where the rally vehicle is much more quickly.

## CHARGING THE DEVICE

The tracking app "RACELIVE" is already installed on the smartphone. The tracking app only works when the display is switched on. To do this, the participant must ensure that the battery does not run out. There are two ways to charge the phone via the USB-C port, one of which **must be provided by the participant** :

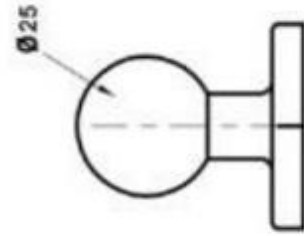
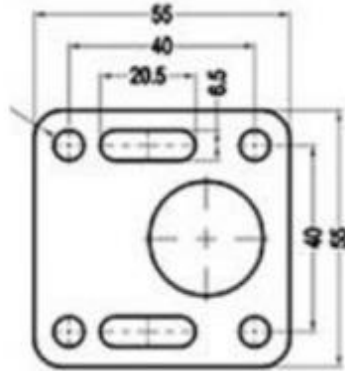
- Via a standard USB socket type A for 5V power. The socket must be within 80 cm of the planned installation location of the device. ( see installation location requirements below). The connection can be part of the main circuit of the vehicle so that the battery is not discharged when the main power is switched off, e.g. overnight in the park. Closed .
- It is also possible to use a power bank for charging. The power bank must have a minimum capacity of 20,000 mAh and be fully charged at the start of the rally.

## INSTALLING THE DEVICE IN THE RALLY CAR

It is an absolute must that the device is placed as follows:

- Either the driver or front passenger must be able to reach the touchscreen without unbuckling the seat belts
- Either the driver or co-driver must be able to see the screen while driving on the special stage

NOTE: at international events, BOTH people must be able to see and reach the touchscreen!



The device is attached to a 1 inch ball head as shown in the picture above. This ball mount must be attached to the vehicle at a location as described above with strong screws. The diameter of the screw holes is 6.5 mm and the distance between the holes is 40 mm. When mounted on the dashboard, a stable support plate must be attached to the back to prevent the screws from penetrating the plate in the event of an accident and the holder from flying around freely in the vehicle.

The mount and smartphone are attached to the ball with a double socket arm clamp. This allows the device to be oriented so that it is easily seen by drivers.

Overall, the GPS tracking system consists of the following parts:



- smartphone with the "RACELIVE" app installed
- Stable smartphone holder with 1 inch ball head
- 1 inch ball head for fixed mounting in the rally vehicle
- Base arm clamp with wing nut for connecting the two ball heads
- charging cable USB Type A to USB Type C



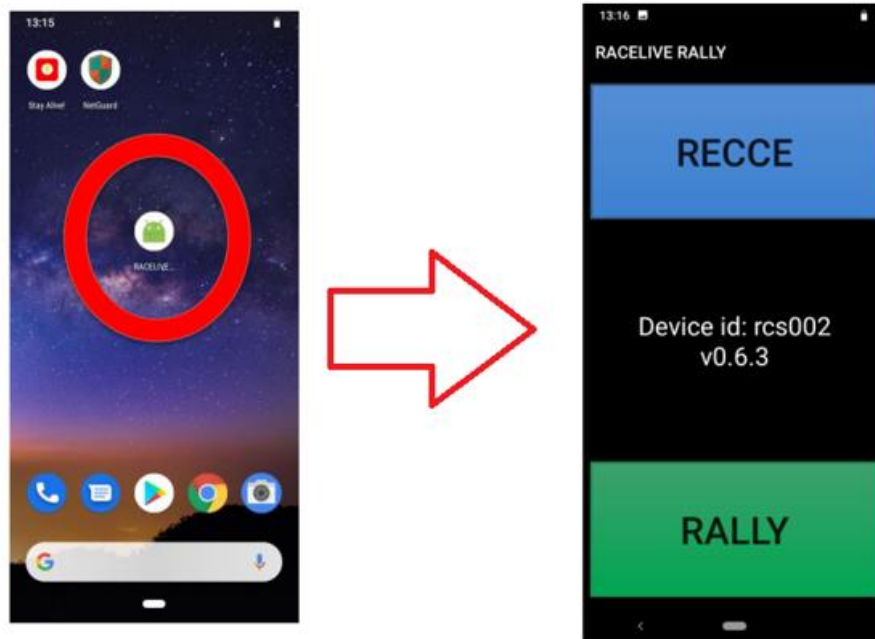
# GPS Safety Tracking - INSTRUCTIONS

All vehicles are equipped with a GPS tracking system, which is operated by AMF, ORM Promoter together with the developer Traxmeet . The tracking is done via this unit and the installed app "RACELIVE". Below you will find the most important functions and operating instructions.

If the device is turned off, start the device using the bottom button on the right side of the device.

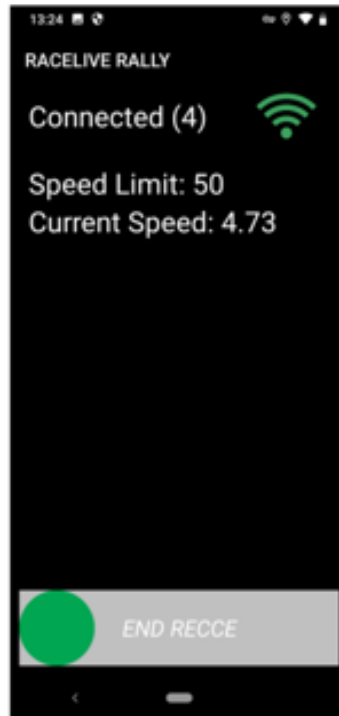
Home screen: If the RACELIVE app does not start automatically, start the RACELIVE app by tapping the icon circled in red in the image.

When the application opens, select the correct mode. For sightseeing, select RECCE at the top and for rally, select RALLY at the bottom.



## RECCE TRACKING

If you press RECCE on the start screen, the view shown on the next page opens and the device searches for a connection. Please fix the device in the inspection vehicle so that the screen is visible and any messages received can be easily recognized. The display must always be on! Supply the device with power so that the battery does not run out!



Once the device has found a connection, it will display “Connected ” and the green icon on the left.

All movements of the device are recorded in the database and can be used to monitor speeds and to check how often a special stage has been driven.

## The device does not display speed limits!

Any speeding violation is automatically saved in the application and system database.

When you have finished the tour, you can stop tracking by sliding the green dot at the bottom of the screen to the right. Close the app during the night and after the tour to save battery life.

## RALLY TRACKING

If you select RALLY mode on the screen, the device will first search for a connection.

Once the connection is established, the device will display the screen as shown on the right:

- SOS slider in the red box
- connection status
- Info on which special stage (SS) you are on
- Time and current speed in the blue box
- OK slider in the green box

## STOPPING ON A SPECIAL STAGE (SS)

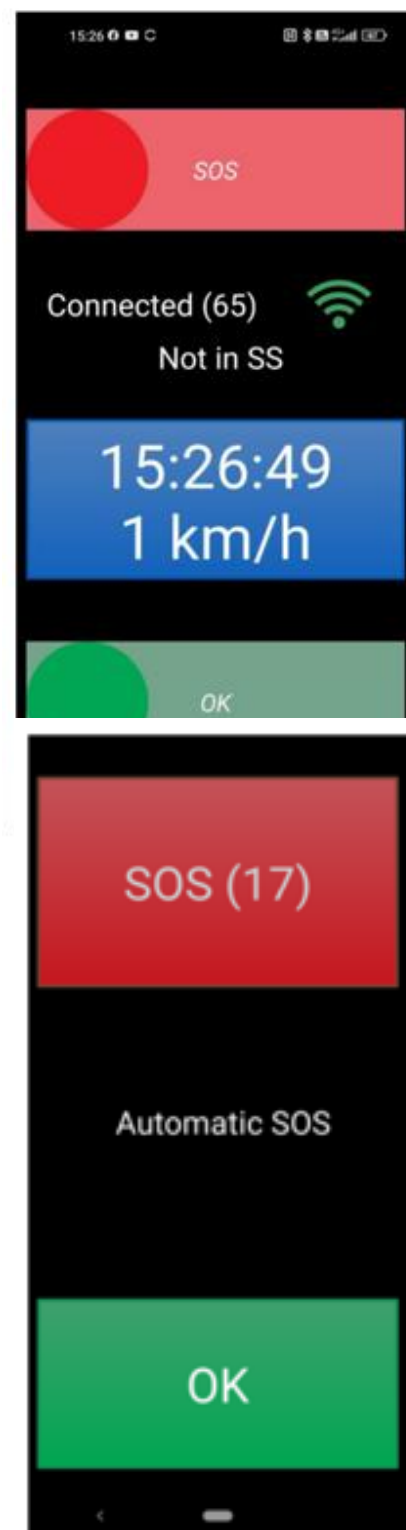
If you stop on a special stage during the rally, e.g. due to a technical problem or to change tires, the screen changes to the view shown below right and the countdown for an automatic SOS message begins.

If you do NOT need medical assistance or fire services , press the OK button on the GPS unit .

If you need medical help or the fire brigade, press the SOS button - this will pause the test and send the emergency services!

If you do not press anything, an automatic alarm will be triggered 20 seconds after stopping **and the test will be interrupted!** The time until the automatic alarm is triggered is shown on the SOS button (see example image: 17 seconds until the alarm is triggered). This only happens on special stages, not on connecting stages! Pressing the OK button deactivates the automatic alarm until you are moving again on the special stage at at least 60 km/h. It makes work in Rally HQ much easier if you press the OK button as quickly as possible when stopping on a special stage so that no false alarm is triggered.

**OK or SOS can be pressed at any time, even when driving slowly on special stages or on connecting stages.**



However, the emergency services will only be alerted immediately if an SOS is issued on a special stage. If an SOS is issued on a liaison stage, the rally management will contact you by telephone.

**After an SOS message, additional buttons appear on the display** to quickly inform rally management and emergency services about incidents:

- FIRE – when help is needed to extinguish a fire
- INJURY – when medical help is needed
- ROAD BLOCKED – when following participants cannot pass
- FALSE SOS – if SOS was pressed incorrectly

**Likewise, after an OK message**, further buttons appear on the display to inform the rally management of details:

- MECHANICAL (RETIRED) – to report a retirement due to technical defect
- OFF ROAD (RETIRED) – to report a retirement due to an accident
- MECHANICAL – Technical problem but you continue, e.g. tire change
- OFF ROAD – accident but you continue, e.g. with spectator help
- ROAD BLOCKED - when following participants cannot pass





## COMMUNICATION WITH RALLY HQ

Rally HQ has the ability to send questions to individual devices to obtain further information.

The screen will then turn blue with the word INFO and the question below. The only possible answers are YES or NO. Several questions can also be asked one after the other.

## RED FLAG

The rally management can send RED FLAG messages to individual or multiple devices and thus neutralize the current special stage.

**If you receive a RED FLAG message on your screen, you must acknowledge receipt by clicking OK at the bottom of the screen.**

**The RED FLAG message remains visible on the screen even after pressing the OK button and only disappears when it is deactivated again by the rally management.**

If you receive a RED FLAG message, the same rules apply as for conventional red flags: reduce speed immediately, drive slowly, stop at the scene of the accident if necessary and follow the instructions from the nearest radio post.

If you receive a RED FLAG message, the rally management will assign you a time for the relevant stage. RED FLAG messages on the GPS device are never triggered automatically, but only manually by the rally management.

## DANGER:

**Both classic red flags from the radio posts along the route and RED FLAG messages on the GPS device are valid!**



## DEPOSIT AND CONTRIBUTION TO COSTS

---

A deposit of EUR 200 is required for the GPS device. The deposit is collected in cash when the road book is issued. The deposit is refunded after the undamaged equipment has been returned, minus a EUR 40 fee for using the system.

Other one-time costs:

- EUR 40,- for the purchase of the stable smartphone holder with 1 inch ball head

Alternatively, the sturdy smartphone holder can also be rented. If the holder is not returned, EUR 40 will be deducted from the deposit.